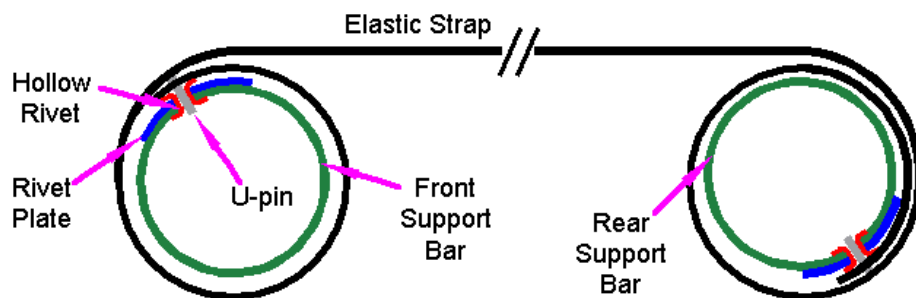


Installing Modifry's Convertible Top Fix

How it works:

For a dealer to replace the elastic they would have to drill out the rivets and set new rivets using special tools (expensive). Modifry's kit has two custom-made straps that fit into the existing rivet holes so they're easy to install without tools.



1. Lower the top about half way.

Stop the top when the front-most section moves just a little beyond vertical. This will allow you to reach both ends of the straps.

Take this time to locate the rivets that hold the straps in place, noting that the rear rivets are under the round support bar.

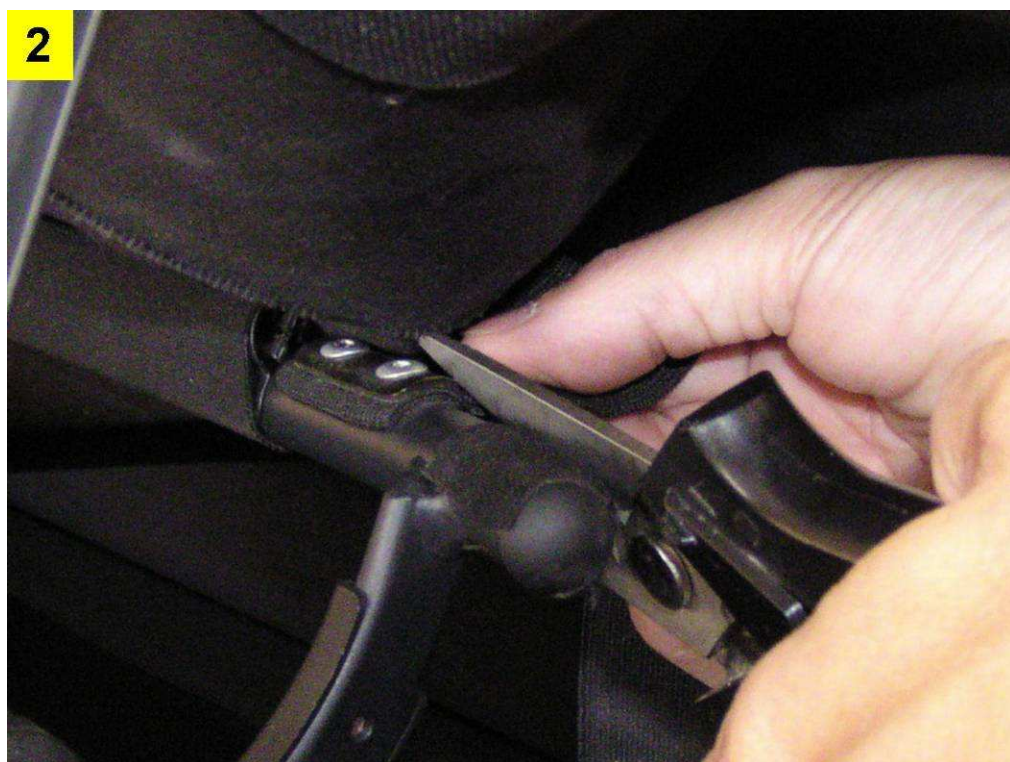
You'll have to insert the special U-shaped pins on the ends of the Modifry straps into the rivet holes.

2. Carefully cut out the old straps.

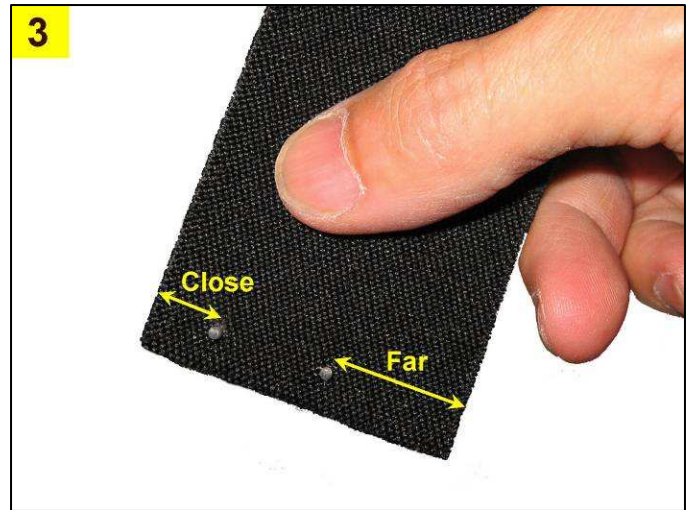
This is a photo of the front end of the strap.

Using a pair of blunt-tip scissors, cut both ends of the strap close to the riveted clamps on the support bars, but be careful not to cut your top.

The front bar is easy to reach, but the rear end of the strap is harder to get to and you have less clearance around the top material so please be careful.



3. Hold the Modify strap like this. Make sure the pins are facing you, and the pin closest to the edge of the strap is towards the center of the car. You will insert this pin into the inboard rivet hole. The pins are glued into the strap and should not fall out with normal handling.



4. Attach rear end of strap.

This photo points to the two rivets on the back side of the rear support bar. This is the hardest part of the install because the rivets are hidden and you have to locate them by feel to insert the pins into the rivet holes.

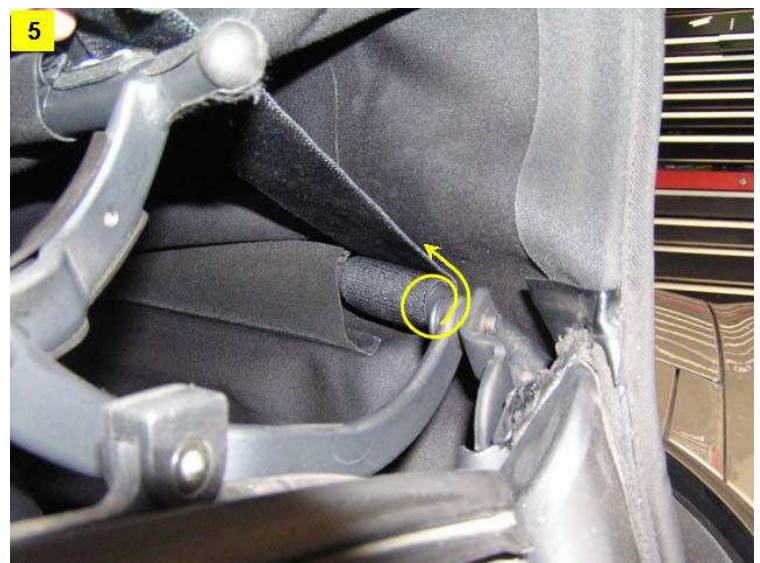


Feed the strap behind the rear support bar from the top, and insert one pin at a time into the rivet holes, starting with the inboard pin. Once the first pin is in, you can swing the U-pin in an arc and the other end will be easier to insert into the other rivet hole.

It may take a few minutes of fumbling to get the pins into the holes, but don't give up too quickly. Once this part is done the rest is easy.

5. Wrap the strap one and a half full turns around itself and the rear support bar.

The strap wraps completely around the bar a little over one full turn. The wrap holds the U-pin in place and causes the strap to be tight against the top fabric when you raise the top.



6. Get ready to attach front end of strap.

Pull the strap forward and pass it under the outside end of the front support bar, over and forward of the short vertical brace, then pass it under the support bar so it comes up behind it.



7. Hook U-pin into front rivet holes. Stretch the strap with your left hand to give you some slack and insert the U-pin into the rivet holes. While holding the U-pin in place, lift the middle of the strap around and over the end of the bar and position it on top of the rivet plate, so the strap wraps over itself just like the rear did.

8. Strap installed

Here's what it looks like after the strap is hooked into the rivet holes and lifted back over the bar. Neat, huh?

You're done. Well, you're half-done. Now you have to repeat the procedure with the second strap on the other side of the car.

